



100 P. THE PORTAL OF THE WEST INDIES



APPRENTICES OF FRANK JAMES INDUSTRIAL SCHOOL, ELAT, WEST AFRICA.



LOLODORF DELEGATES TO BIBLE CONFERENCE ELAT, WEST AFRICA, NOVEMBER 1910.

Missionary Residence - Metet, Kamerun, West Africa.





PARADE BY SCHOOLBOYS MAC LEAN MEMORIAL STATION, U. S. DEPT. WEST TROOP. HAISERS BIRTHDAY 1909

Wagon Transportation to the Interior
of Kamerun, West Africa.





Cargo Canoes -
Nlong River,
Kamerun,
West Africa.

This is one of a set of 72 cards illustrating the field and work of the West Africa Mission of the Presbyterian Church in the U. S. A. On sale by Albert G. Adams, Westwood, Cincinnati, O. 25c per doz. Set of 72, \$ 1.00. Half price to Missionary Societies.

POST CARD

The work of the West Africa Mission has multiplied more than ten times in seven years. The missionary force has increased barely 50%. Large reinforcements are absolutely necessary to take care of the great ingathering of souls, that the day of opportunity be not lost.

These are most urgently needed:

German and Spanish Teachers.
Physicians.
Ministers.
Single Women.
Men for Industrial Work.
A Printer.

For Address only.

Made
in
Germany



THE HOUSE OF THE CHIEF OF THE VILLAGE OF KAUAI, HAWAII

A Wild Hog - Kamerun,
West Africa.



A Decorated Door - Kamerun,
West Africa.





GRAVE OF ABENE HEADMAN WADERON WEST AFRICA



PART OF PLANTATION STATION WEST AFRICAN MISSION.



SCHOOL HOUSES, MACLEAN MEMORIAL STATION, KAMERUN, WEST AFRICA, 1904



A GROUP OF CHRISTIANS, LOGBARRÉ, CAMERUN, WEST AFRICA 13795



TRAVEL BY HAMMOCK IN WEST AFRICA 2195



A VILLAGE SCHOOL IN WYOMING, WEST AFRICA



A WRESTLING MATCH, THE BULU NATIONAL SPORT



VIEWS FROM EFULEN HILL, WEST AFRICA.



Crossing the Nlong River, Kamerun, West Africa.



This is one of a set of 72 cards illustrating the field and work of the West Africa Mission of the Presbyterian Church in the U. S. A. On sale by Albert G. Adams, Westwood, Cincinnati, O. 25c per doz. Set of 72, \$ 1.00. Half price to Missionary Societies.

POST CARD

The work of the West Africa Mission has multiplied more than ten times in seven years. The missionary force has increased barely 50%. Large reinforcements are absolutely necessary to take care of the great ingathering of souls, that the day of opportunity be not lost.

These are most urgently needed:

German and Spanish Teachers.

Physicians.

Ministers.

Single Women.

Men for Industrial Work.

A Printer.

For Address only

Made
in Germany



ROADS TO THE HILLS, MAC LEAN MEMORIAL STATION, KAUAI, HAWAII



Presbyterian Church at Lam,
Kamerun, West Africa.



GOVERNMENT GUARD HOUSE, EBOLOWA, KAMERUN, WEST AFRICA



LIMELITE

AMES INDUSTRI

A Sunday Congregation at Yebekolo, Kamerun, West Africa.



This is one of a set of 72 cards illustrating the field and work of the West Africa Mission of the Presbyterian Church in the U. S. A. On sale by Albert G. Adams, Westwood, Cincinnati, O. 25c per doz. Set of 72, \$ 1.00. Half price to Missionary Societies.

POST CARD

The work of the West Africa Mission has multiplied more than ten times in seven years. The missionary force has increased barely 50%. Large reinforcements are absolutely necessary to take care of the great ingathering of souls, that the day of opportunity be not lost.

These are most urgently needed:

German and Spanish Teachers.

Physicians.

Ministers.

Single Women.

Men for Industrial Work.

A Printer.

For Address only

Made
in Germany



Men's Hospital - Mac Lean Memorial Station, Kamerun, West Africa.



GIRLS' SCHOOL MALLEK MEMORIAL STATION, KAMERUN, WEST AFRICA. 13791.



GERMAN SCHOOL, MAC LEAN MEMORIAL, STATION, KAMERUN, WEST AFRICA 13792.

West African Bows and Arrows,
Knives, Axes etc.





PLANT OF THE FRANK JAMES INDUSTRIAL SCHOOL, ELAT, WEST AFRICA.

West Africa:

An Ant Hill



A Scorpion



This is one of a set of 72 cards illustrating the field and work of the West Africa Mission of the Presbyterian Church in the U. S. A. On sale by Albert G. Adams, Westwood, Cincinnati, O. 25c per doz. Set of 72, \$ 1.00. Half price to Missionary Societies.

POST CARD

The work of the West Africa Mission has multiplied more than ten times in seven years. The missionary force has increased barely 50%. Large reinforcements are absolutely necessary to take care of the great ingathering of souls, that the day of opportunity be not lost.

These are most urgently needed:

- German and Spanish Teachers.
- Physicians.
- Ministers.
- Single Women.
- Men for Industrial Work.
- A Printer.

For Address only

Made
in Germany.





DORMITORIES, ELAT, KAMERUN, WEST AFRICA.

Le Vapeur " Capitaine Pleigneur " à Loudima-Mâri - Congo Français



PHOT
AB&C
FRANCS

Collection J. Audema

Frontière Sud du Congo Français à Massabe



PROF.
A. B. & C.
PARIS

Collection J. Sudema



Logement du Docteur et Hôpital de Loango (Congo Français)

Vue d'une Factorerie sur le Lac Cayo - Congo Français



Factorerie Da Silveira - Congo Français



Phare de Pointe Indienne - Congo Français



MANDJI. - Vue sur le Kouilou - Congo Français



La Rivière des diamants à Loango (Congo Français)



A B&N





Pahouin Amvom - Como - Congo Français



Indigènes du Congo Français









Procédé loango pour recueillir le vin de Palme - Congo Français



Une Allée de cocotiers au Lac Cayo - Congo Français



PHOTO
AB&C
SANCÉ

Un Tailleur Loango (Congo Français)

Collection J. Audema



Femmes loangos 'civilisées' - Congo Étranger

Type Bakouni - Congo Français



Guerrier Andassa (Face) - Congo Français



Collection J. Andema



Groupe Pahouins - Congo Français



PHOT.
A. B. & C.
PARIS

Collection J. Audema

L' " Alcyon " Aviso stationnaire au Congo Français



Campement - Vallée de la Moundjié - Mayoumba - Congo Français



Aldeasa

Sur les bords du Niari à Loudima - Congo Français



Vue principale du Poste de Loudima - Congo Français





Poste de Massabe en 1896 - Congo Français



Dans le Mayumoe - Congo Français -

Poste de Benito - Congo Français



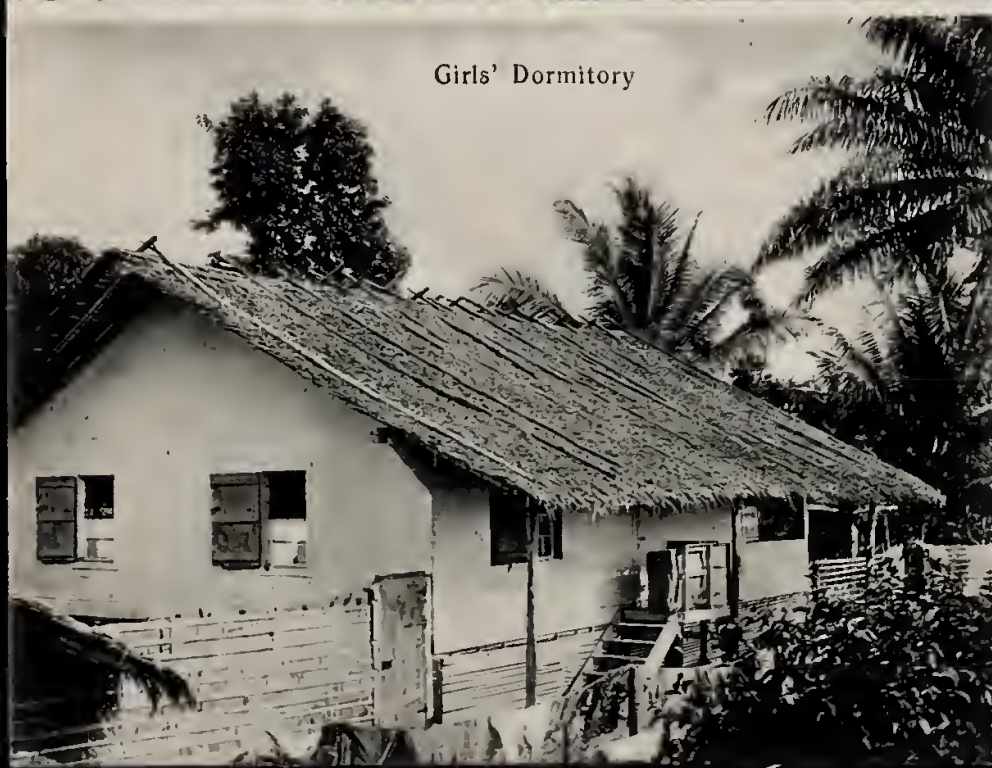


PART OF BENITO STATION, SPANISH GUINEA, WEST AFRICA 1879.

Benito, Spanish
Guinea,
West Africa:
School House



Girls' Dormitory





Scène de fétichisme - Bavili - Congo Français



Mpongwé Family
Libreville ; Gaboon. W. A. G.

~~Handwritten scribble~~

SL

~~Vertical handwritten scribble~~

Page 201. Civilized Family

C37674-1

~~Horizontal handwritten scribble~~



Mpongwe Women,
civilised dress,
Libreville; Gaboon
West Africa,

Tasman



Mpongwe Woman.
native dress,
and hair-dressing.
Libreville; Gaboon
West Africa

Nassau



Native dress,
and head-dress.
Accra
Gold Coast
West Africa.



Njammwa,
and his brother.
Evo~~o~~ⁿole.

Recd. Oct. 22. 1906



Native Woman. 2201.



Bulu tribe (Fang). Batanga
West Africa.

Group A. No. 3



Family
Mrs. Bushnell, Mr. Smith, Mrs. Smith, Mr. Bushnell
J. H. Mearns, Miss Cunningham, Mr. Reading, Mrs. Reading

No. 4,

Junior, Native girls, the various
maids

Wedding guests at the

2nd woman on bottom
row is Miss Dewsnop,
(The name isn't clear in
photo.).

to Mrs. Swinton

SL

~~Group 6. 10. 7.~~ page 209. Trading

C 37674-12



Mrs. Maude F. Lindsay

Miss Ethel Sternberg

" " Kuhl

Mrs. Elizabeth Strong

Rev. R. H. Nassau

Mrs. A. Sternberg

Starke, Fla. Jan. 1, 1908




The three islands near the village Igendja, 80 kilometers downstream from Lambarene on the Ogoué-river. It was here on a September's day in 1915 that the idea, that reverence for life is the basic element of ethics and true humanity, came to Albert Schweitzer.

Lambaréne, October 1966.

PHOTO BY ERICA C. ANDERSON 10488



View from the "American Hill" in Andoude over the Ogowe-river.
LAMBARENÉ  marks the place, where Albert Schweitzer's
hospital is located.



ENLARGING LOLODORF CHURCH, KAMERUN, WEST AFRICA. 13788.



Native Traders. Mpongwe tribe.
Gaboon. West Africa